



LOGIC
TECH
CORP

Dedicated to merging technology and dentistry
through innovative solutions.

about us

Logic Tech is a Canadian company that has been proudly servicing the dental industry for over 30 years. Our Paradigm Clinical software has been installed in over 1,000 offices across Canada.

At Logic Tech we are dedicated to merging new technologies with Paradigm Clinical to provide the very best practice management solution on the market.

As the speed of technology continues to change the landscape of our society we pride ourselves in staying abreast of the new development of these technologies.

Our objective is to utilize cutting-edge technology in providing dentists with the tools to both manage and market their business efficiently and successfully.

to learn more follow us on





LOGIC
TECH
CORP

Dedicated to merging technology and dentistry
through innovative solutions.

seamless integration

Paradigm Clinical, our comprehensive module-based software is a complete dental practice management system that offers flexibility and functionality to your office. We are also HIPAA compliant as we know the security of patient data is of the utmost importance.

For a true paperless office, we offer a full suite of modules including Odontogram and Periodontal Charting, Clinical Notes, Electronic Forms and Patient Communication.

Paradigm Clinical has the ability to access patient data from each clinic from a single user log-in which allows you to manage all your clinics from one single location. Let us grow with you – whether you have a single office or multiple offices.

intuitive,
easy-to-use interface

Paradigm
Clinical
enables you to
be in charge
of your
practice!



LOGIC
TECH
CORP

Dedicated to merging technology and dentistry
through innovative solutions.

Clinical Solution

Paradigm Clinical has innovative modules to offer flexibility and functionality to your office.



Paradigm Clinical is constantly evolving with the ever-changing landscape of dentistry by offering an innovative, easy-to-use interface and a comprehensive newly-designed module for Periodontal and Odontogram Charting, and Clinical Notes.

Odontogram
Periodontal
Charting
Clinical Notes
Electronic
Forms

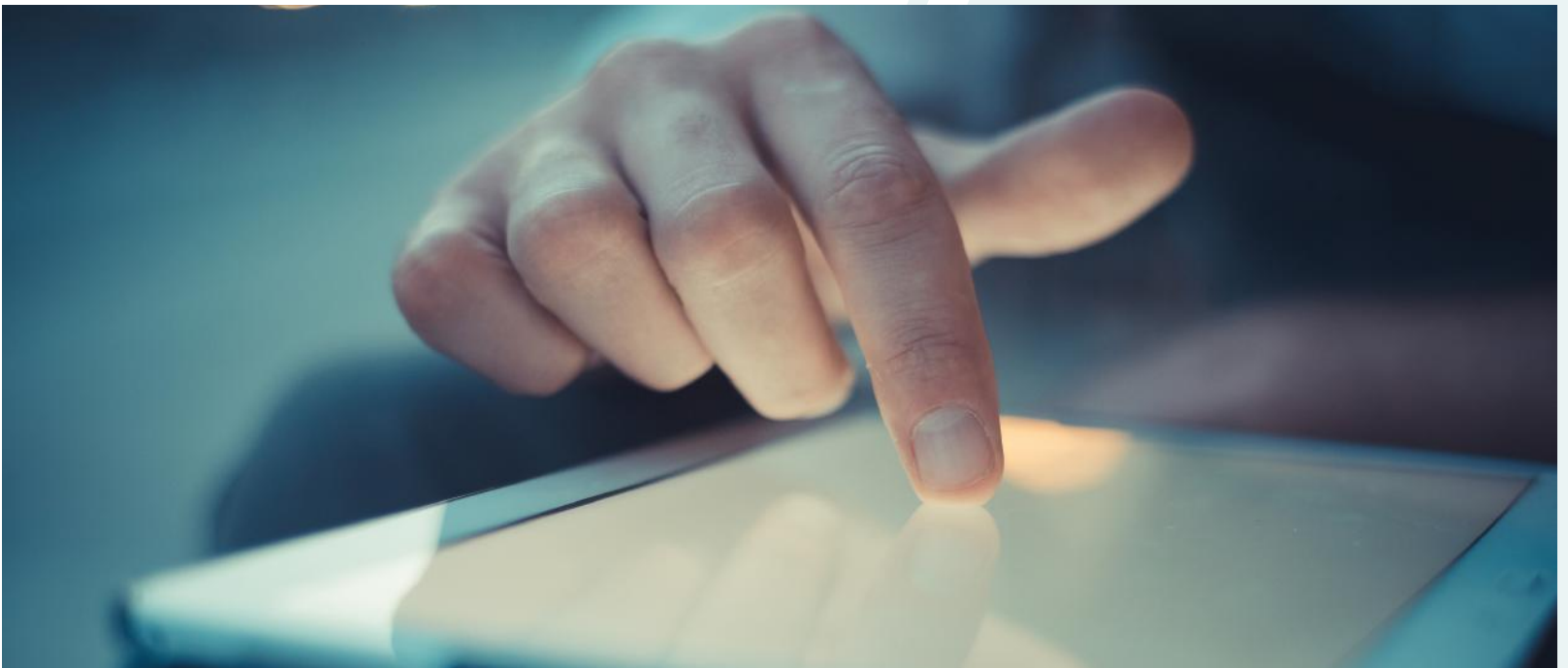


LOGIC
TECH
CORP

Dedicated to merging technology and dentistry
through innovative solutions.

Clinical Solution

To alleviate the burden of excessive paperwork for the practice and the patient, our Electronic Forms module has the ability to electronically create and customize forms, such as registration, medical history and consent.



We make it simple! A patient fills out a form on a tablet, submits it electronically and the results are updated to Paradigm Clinical in real-time. With our Electronic Forms module there is no need to scan countless documents.



**LOGIC
TECH
CORP**

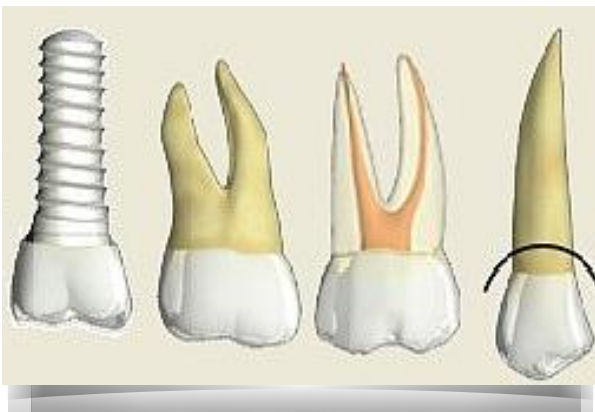
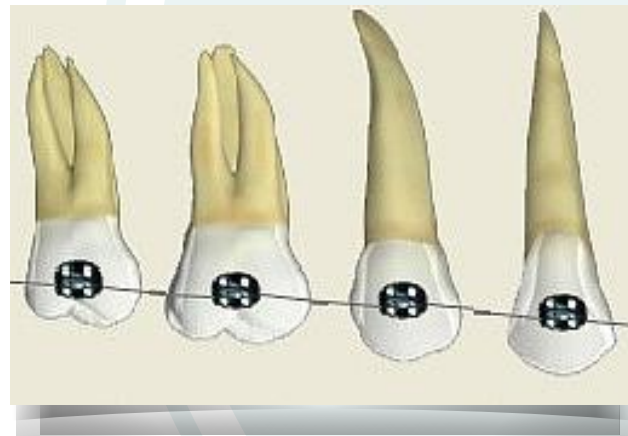
Dedicated to merging technology and dentistry through innovative solutions.

Clinical Solution

digital odontogram

An electronic clinical chart should reflect what a traditional paper chart looks like and this is precisely what our digital odontogram does!

All elements of a paper clinical chart are represented in the digital odontogram.





LOGIC
TECH
CORP

Dedicated to merging technology and dentistry
through innovative solutions.

Clinical Solution

treatment planning



You can create, present, select and track all treatment proposals directly from the patient's odontogram. The Treatment Planning module is fully integrated with Paradigm Clinical, allowing you to schedule appointments immediately upon acceptance of proposals.

The more options you can offer your patients, the more likely they will accept treatment sooner. This makes managing your recalls much easier and will increase your overall patient retention.



LOGIC
TECH
CORP

Dedicated to merging technology and dentistry
through innovative solutions.

mobile dentistry

With our Paradigm Clinical app, you can view your patient appointments, ledgers and patient data from anywhere on your mobile device. This brings you the convenience of remotely accessing your practice data from home, work or even at the cottage.



working
out of your
office just
got easier!



LOGIC
TECH
CORP

Dedicated to merging technology and dentistry
through innovative solutions.

management dashboard

make sure you are asking the right questions

Logic Tech has proven its leadership in the industry by incorporating a financial and production management dashboard in Paradigm Clinical to track the operations of your practice using customizable key performance indicators (KPI).

Combined with your management expertise, these cutting edge tools provide everything you need to develop your own Decision Support System. It's the key to your growth!

what is my
productivity
ratio? per
dentist? per
hygienist?

what about
my accounts
receivable?

what is my
operating
expense
ratio?

how can I
increase my
profitability?





**LOGIC
TECH
CORP**

Dedicated to merging technology and dentistry
through innovative solutions.

patient communication

Take your practice to the next level of patient communication with our SMS/text and email messaging.

Our system will automatically send out appointment confirmations, pre-confirmations, recare reminders and birthday greetings to your patients.

Save your valuable time by allowing patients to confirm their own appointment

One
Automated message confirmation is sent to a patient

Two
Patient confirms by email or SMS/text message

Three
Results are updated to Paradigm Clinical in real time.

three
easy
steps!



LOGIC
TECH
CORP

Dedicated to merging technology and dentistry
through innovative solutions.

patient communication

Our Newsletter module enables your office to automatically email to patients customizable newsletters.

Good communication is essential for the provision of high quality dental care and in providing the information needed for your patients to make informed decisions.

Building a relationship with your patients allow them to stay loyal to your office.



customize
your email
newsletters!



LOGIC
TECH
CORP

Dedicated to merging technology and dentistry
through innovative solutions.

support and training



We have a team of qualified representatives to help with every step of the way! We are here to guide and assist you throughout the entire process of either going paperless or converting to Paradigm Clinical.

We understand the process may seem daunting but you have the full support of our technical and hardware team. Our goal is to ensure the transition is seamless!

We offer in-person training based on your level of knowledge – even if you have never used Paradigm Clinical, our instructors have the expertise in catering to new users! We even offer on-site specialized training for our Clinical module.

As Paradigm Clinical is constantly evolving we offer online continuing education to ensure you have the full knowledge of the capabilities of Paradigm Clinical.



**LOGIC
TECH
CORP**

Dedicated to merging technology and dentistry through innovative solutions.

paradigm system requirement

WORKSTATION

Component	Recommended	Notes
Processor (CPU)	Intel i5/i7 Processor	
Hard Drive	1TB	Actual requirements will vary based on your system configuration and the applications and features you choose to install.
Memory (RAM)	4/8GB for 32bit/64bit Windows, respectively	Additional memory may be required, depending on operating system requirements.
Motherboard	Built-in (Onboard) Serial Port (COM, RS232)	Required for sending EDI. USRobotics 56K v.92 external serial port fax/modem. Modem required for each workstation to send EDI.
Monitor	19" Monitor	
Video/Graphic	XGA (1280 x 960 pixels)	
DVD-ROM Drive	Required	
Operating System	Windows 7 Pro®, Windows 8/8.1 Pro®, Windows 10 Pro®	.net Framework required for paperless modules. Windows 7/8 Pro® 32-bit and 64-bit are compatible with Paradigm Office Suite.
Antivirus	Required	Microsoft Security Essentials anti-virus software recommended.

SERVER (Recommended for networks of 5 or more computers)

Component	Recommended	Notes
Processor (CPU)	Intel i7/Xeon Processor	
Hard Drive	2TB *, 2 x 256GB or higher SSD	Actual requirements will vary based on your system configuration and the applications and features you choose to install.
Memory (RAM)	16GB or higher	Additional memory may be required, depending on operating system requirements.
Motherboard	Built-in (Onboard) Serial Port (COM, RS232)	Required for sending EDI. USRobotics 56K v.92 external serial port fax/modem. Modem required for each workstation to send EDI.
Monitor	19" Monitor	
Video/Graphic	XGA (1280 x 960 pixels)	
DVD-ROM Drive	Required	
Operating System	Windows Server 2008 R2, Windows Server 2012	
Antivirus	Required	Microsoft Security Essentials anti-virus software recommended.

FOR PRINTERS / ACCESSORIES / PARADIGM MODULES

Component	Recommended	Notes
Remote Connection	Hi-Speed Internet access or Symantec	
Backup / Archive	USB flash memory, external USB hard drive; 1 backup device per business day per week recommended	Logic Tech recommends a daily backup of your database on a different media for each day of operation. Please call our office for more information.
Printer / General	Latest HP Laser series printer	For black & white printing (reports, statements, etc)
Label Printer	Latest Dymo series label printer	For mailing labels, chart labels, etc.
Document Scanner	Windows compatible scanner with TWAIN Driver Compliance	Required for Documents Management module. Epson V750-M Pro recommended for x-ray film scanning.
High-Speed Internet		Required for Email and SMS confirmation modules, Remote Internet Backup Service, and ITRANS
Computer Network	Wired CAT5e/6 network with supporting gigabit switches and/or router	

* Minimum of 1TB free space required for optimal performance of Paradigm Office Suite and Paradigm V6